



FALCONTM

STRUCTURES

Rapid Response



TABLE OF CONTENTS

[20-Foot Mini Clinic/Work Room](#)

[20-Foot Double-Wide Clinic/Work Room](#)

[20-Foot Clinic/Work Room Expander](#)

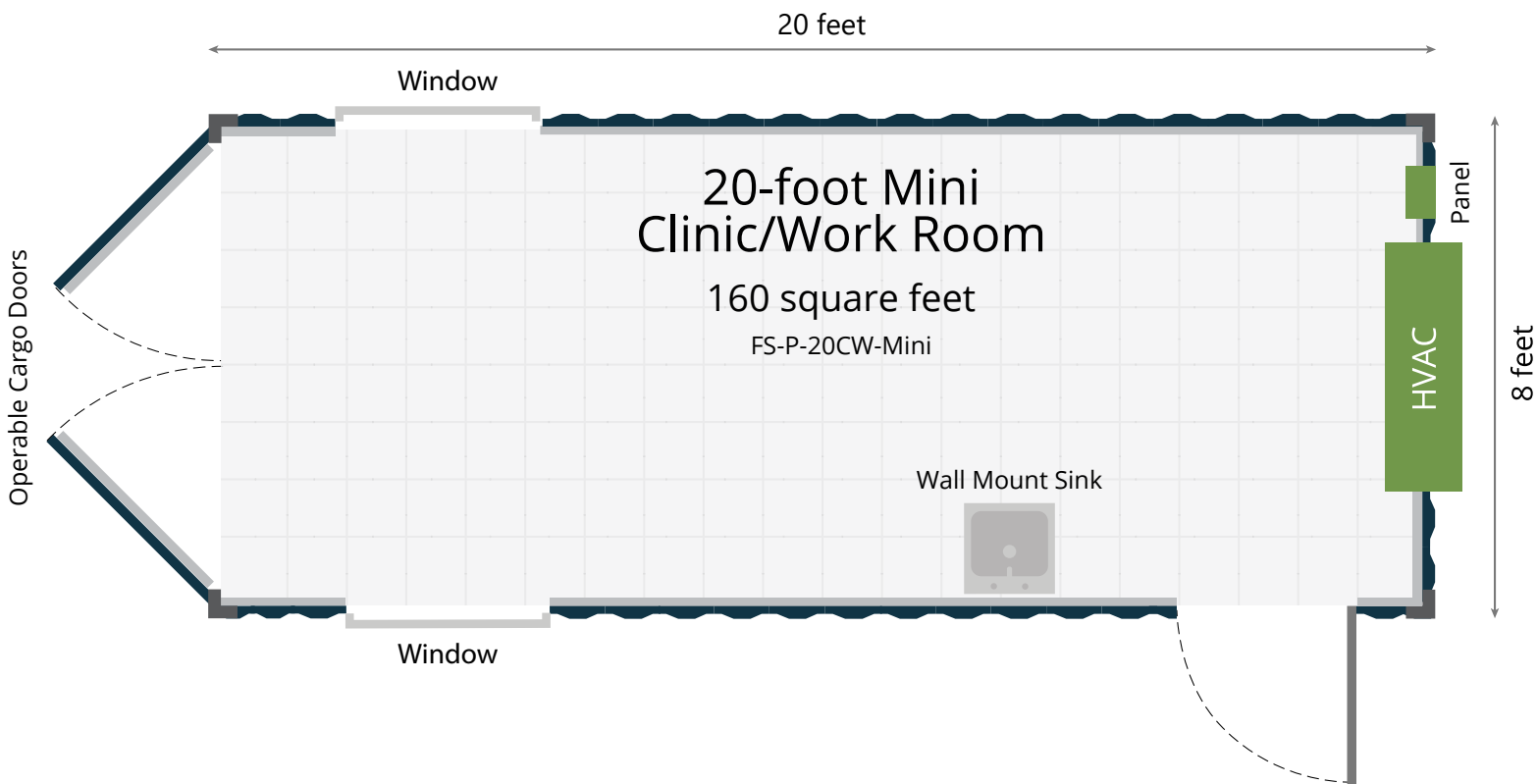
[40-Foot Double-Wide Clinic/Work Room](#)

FALCON

STRUCTURES

20-FT MINI CLINIC/WORK ROOM

FS-P-20CW-MINI



7717 Gilbert Rd., Manor, TX 78653
falconstructures.com



Call us at [512.231.1010](tel:512.231.1010) or send an e-mail to
sales@falconstructures.com

SPECS

- Washable FRP walls over wood framing and batt insulation
- Operable cargo doors
- Epoxy covered floor for ease in cleaning and disinfecting
- One wall mount sink
- One 3-foot wide exterior personnel door with egress hardware
- Two 3-foot by 3-foot window
- Two standard 4-foot light fixtures, each with two 4-foot LED tubes
- Seven quad 110V outlets
- 125A panel with disconnect that can be fed by a generator
- One data pass-through
- One 15K PTAC unit
- Built in a standard, one-trip (close to new) container

EXTERIOR

Width 8-feet

Length 20-feet

Height* 8-feet, 6-inches

INTERIOR

Width 7-feet

Length 18-feet, 6-inches

Height* 7-feet, 6-inches

**Heights are based off a standard shipping container. Taller high-cube containers are available upon request.*

***All specifications and pricing subject to change without notice.*

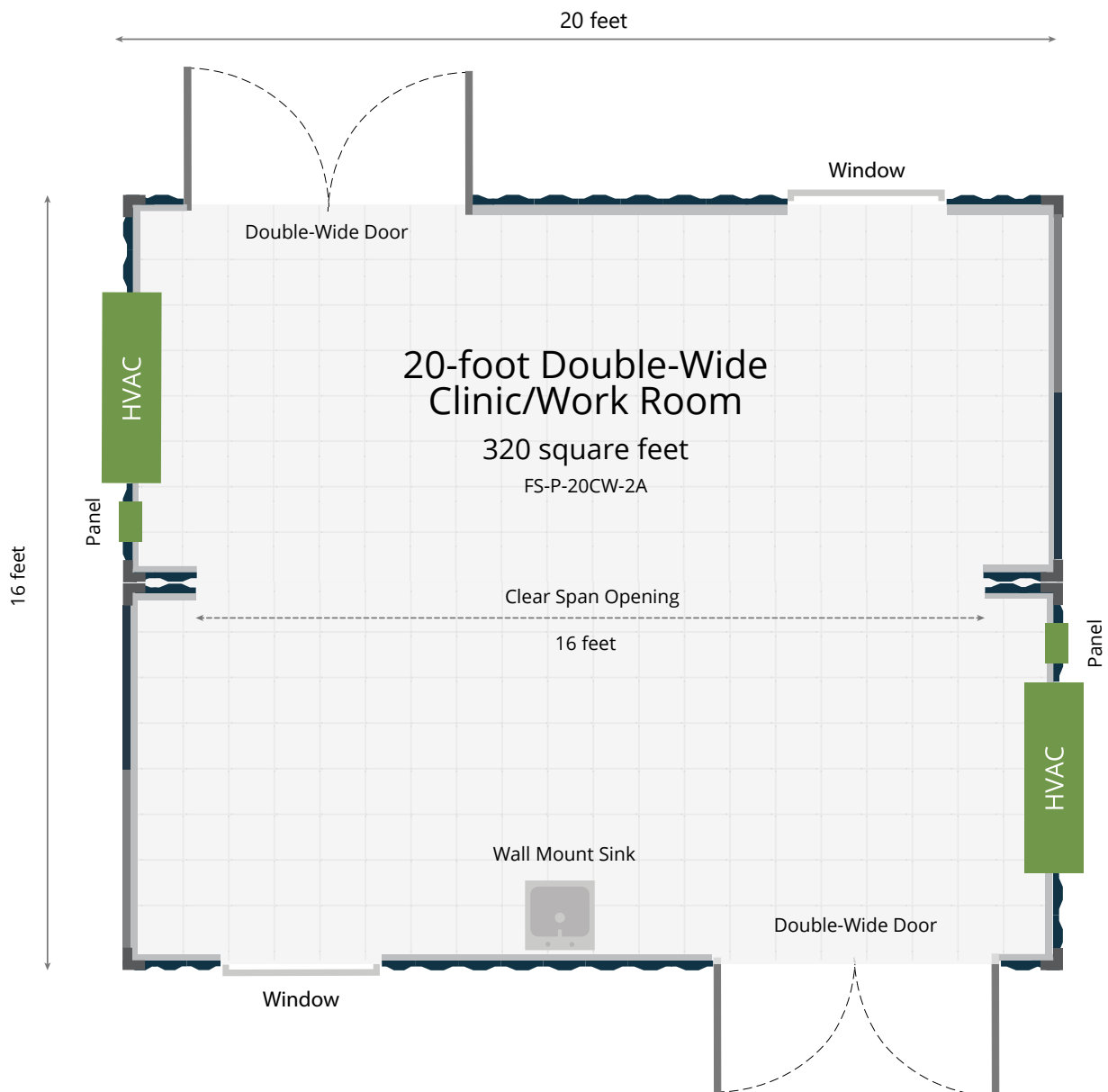
****Dimensions are approximate, as containers vary from manufacturer to manufacturer.*

FALCON

STRUCTURES

20-FT DOUBLE-WIDE CLINIC/WORK ROOM

FS-P-20CW-2A



SPECS

- Washable FRP walls over wood framing and batt insulation
- Epoxy covered floor for ease in cleaning and disinfecting
- One wall mount sink
- Two sets of double-wide exterior personnel doors, 6-foot wide by 6-foot, 8-inches tall, with egress hardware
- Two 3-foot by 3-foot windows
- Two 16-foot wide clear span openings
- Four standard 4-foot light fixtures, each with two 4-foot LED tubes
- Ten quad 110V outlets
- 125A panel with disconnect that can be fed by a generator
- Two data pass-throughs
- Two 15K PTAC units
- Built in two standard, one-trip (close to new) containers

EXTERIOR

Width 16-feet

Length 20-feet

Height* 8-feet, 6-inches

INTERIOR

Width 15-feet

Length 18-feet, 6-inches

Height* 7-feet, 6-inches

**Heights are based off a standard shipping container. Taller high-cube containers are available upon request.*

***All specifications and pricing subject to change without notice.*

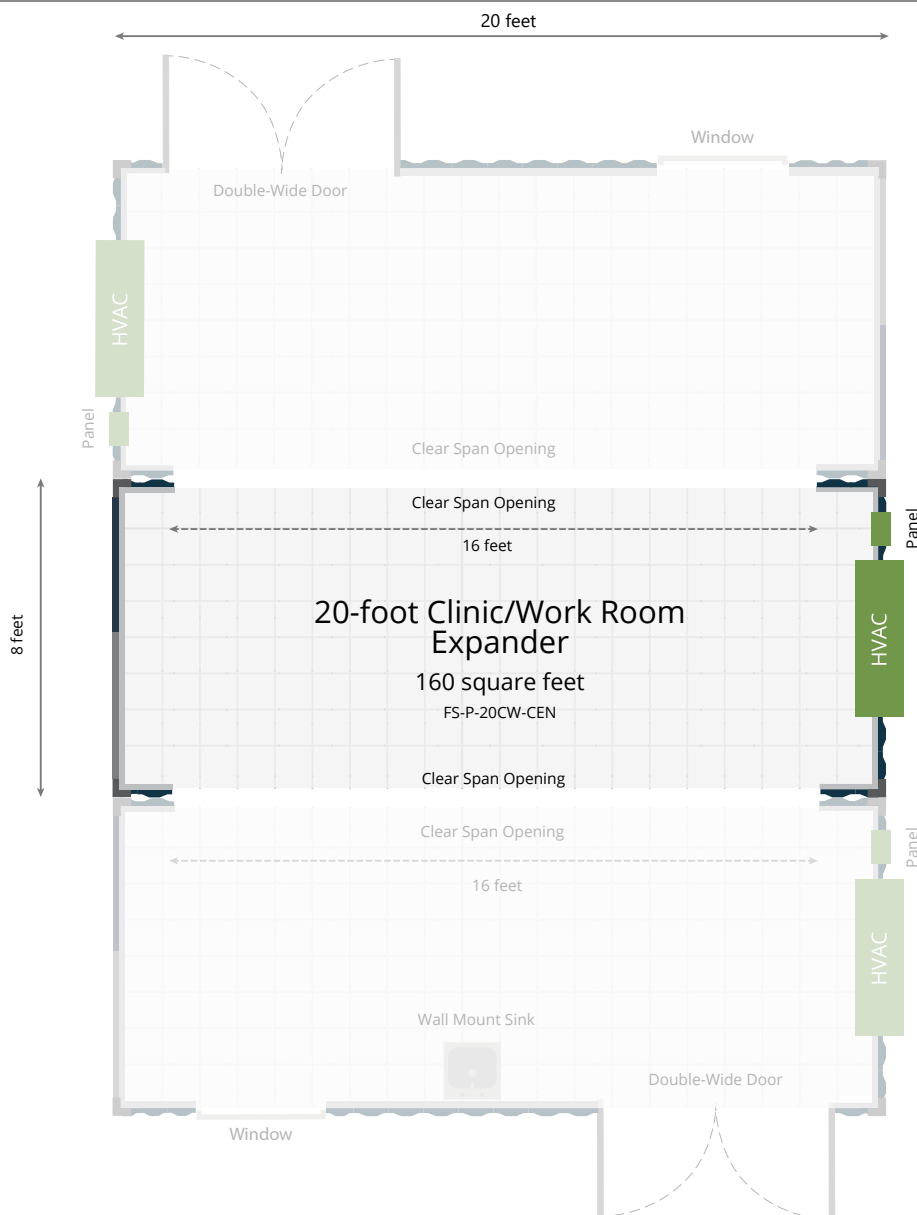
****Dimensions are approximate, as containers vary from manufacturer to manufacturer.*

FALCON

STRUCTURES

20-FT CLINIC/WORK ROOM EXPANDER

FS-P-20CW-CEN



7717 Gilbert Rd., Manor, TX 78653
falconstructures.com



Call us at [512.231.1010](tel:512.231.1010) or send an e-mail to
sales@falconstructures.com

SPECS

- Washable FRP walls over wood framing and batt insulation
- Epoxy covered floor for ease in cleaning and disinfecting
- Two 16-foot wide clear span openings
- Two standard 4-foot light fixtures, each with two 4-foot LED tubes
- Two quad 110V outlets
- 125A panel with disconnect that can be fed by a generator
- One data pass-through
- One 15K PTAC unit
- Built in a standard, one-trip (close to new) container

EXTERIOR

Width 8-feet

Length 20-feet

Height* 8-feet, 6-inches

INTERIOR

Width 7-feet

Length 18-feet, 6-inches

Height* 7-feet, 6-inches

**Heights are based off a standard shipping container. Taller high-cube containers are available upon request.*

***All specifications and pricing subject to change without notice.*

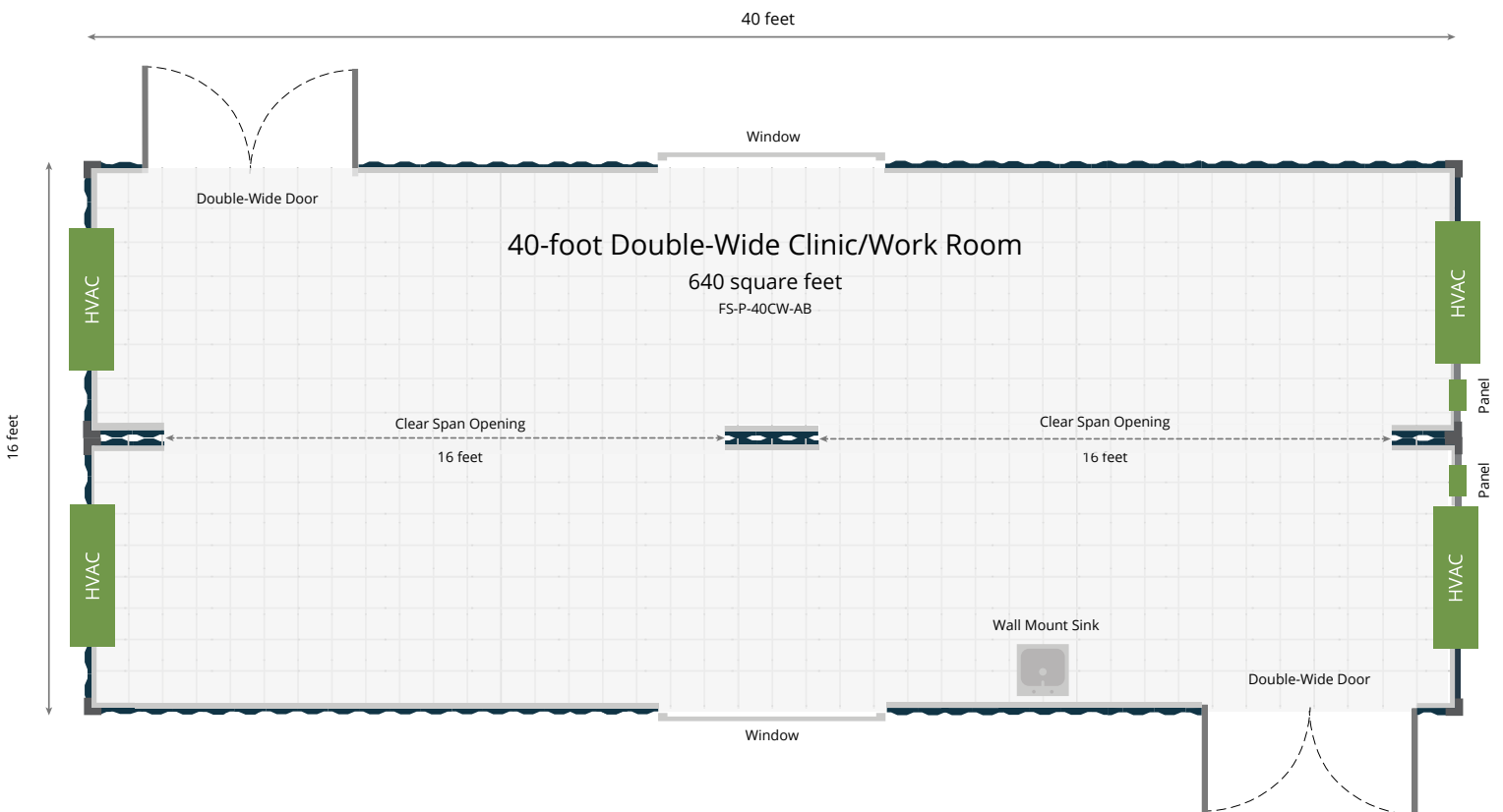
****Dimensions are approximate, as containers vary from manufacturer to manufacturer.*

FALCON

STRUCTURES

40-FT DOUBLE-WIDE CLINIC/ WORK ROOM

FS-P-40CW-AB



SPECS

- Washable FRP walls over wood framing and batt insulation
- Epoxy covered floor for ease in cleaning and disinfecting
- One wall mount sink
- Two sets of double-wide exterior personnel doors, 6-foot wide by 6-foot, 8-inches tall, with egress hardware
- Two 16-foot wide clear span openings
- Two 6-foot by 3-foot windows
- Eight standard 4-foot light fixtures, each with two 4-foot LED tubes
- Twelve quad 110V outlets
- 125A panel with disconnect that can be fed by a generator
- Two data pass-throughs
- Four 15K PTAC units
- Built in two standard, one-trip (close to new) containers

EXTERIOR

Width 16-feet

Length 40-feet

Height* 9-feet, 6-inches

INTERIOR

Width 15-feet

Length 38-feet, 7-inches

Height* 8-feet, 6-inches

**Heights are based off a standard shipping container. Taller high-cube containers are available upon request.*

***All specifications and pricing subject to change without notice.*

****Dimensions are approximate, as containers vary from manufacturer to manufacturer.*

TOP RAPID RESPONSE MODIFICATION OPTIONS



Work Surface



Cabinets



Portable Sinks



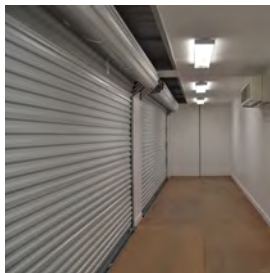
Pass-Through
Window



Lockers



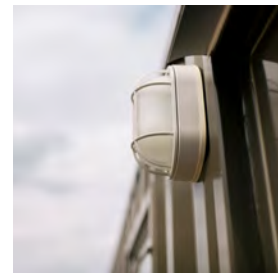
Window in Door



Roll-Up Doors



Double-Wide
Doors



Security Light